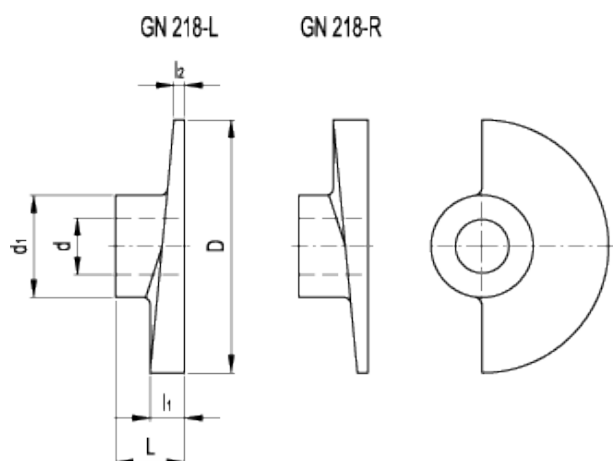


GN 218

Cam latches



technical informations

Material

Sintered steel.

- Execution L: with left turn clamping direction.
- Execution R: with right turn clamping direction.

Features and applications

GN 218 cam latches are available as right or left hand models according to the direction the door should be open.

Standard Elements	Main dimensions						Mounting hole	Weight
Description	D	L~	d ₁	l ₁	l ₂	l ₃	d _{H8}	g
GN 218-SM-35-B8-L	35	15	18	7	3	7	B8	34
GN 218-SM-35-B8-R	35	15	18	7	3	7	B8	34
GN 218-SM-35-B10-L	35	15	18	7	3	7	B10	31
GN 218-SM-35-B10-R	35	15	18	7	3	7	B10	31
GN 218-SM-65-B12-L	65	20	23	10	5	7	B12	117

GN 218-SM-65-B12-R	65	20	23	10	5	7	B12	117
GN 218-SM-80-B16-L	80	24	27	12	6	9	B16	199
GN 218-SM-80-B16-R	80	24	27	12	6	9	B16	199



STANDARD MACHINE ELEMENTS WORLDWIDE